

# WILLINGBORO

## TOWN CENTER



## WILLINGBORO TOWN CENTER

### RETAIL SPACE & RESTAURANT PAD AVAILABLE

- Total Inline Space Available for Lease: Approximately 7500 +/- SF
- 1 Restaurant Pad with Liquor License Available
- Anchored by Dollar Tree, join this high volume retail center containing the new 29,000 SF Rowan College at Burlington County, Willingboro Public Library, ACME and many more
- This center is servicing the densely populated communities of Willingboro, Burlington Township, Edgewater Park, Burlington City, Beverly, Delanco, Delran and Florence
- Servicing trade area population over 130,000
- 218 Apartments
- Bus Transportation
- Average Daily Traffic Count: Approximately 42,000

### CONTACT:

JIM DUGAN  
Vice President - Real Estate  
Office: 856-234-5151  
[jdugan@delcodevelopment.com](mailto:jdugan@delcodevelopment.com)

DELCO DEVELOPMENT, LLC  
200 Campbell Drive  
Suite 200  
Willingboro, NJ 08046

[www.delcodevelopment.com](http://www.delcodevelopment.com)

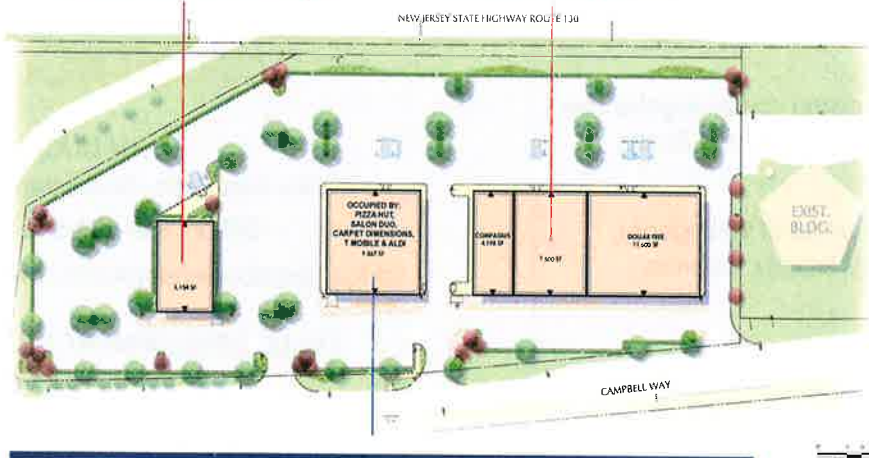


# WILLINGBORO TOWN CENTER



5154 SF  
PAD SITE AVAILABLE

7500 SF  
SPACE AVAILABLE



**CURRENT TENANTS INCLUDE:**  
Pizza Hut, Salon Duo, Carpet Dimensions, & T Mobile

## CONTACT:

**JIM DUGAN**  
Vice President - Real Estate  
Office: 856-234-5151  
jdugan@delcodevelopment.com

**DELCO DEVELOPMENT, LLC**  
200 Campbell Drive  
Suite 200  
Willingboro, NJ 08046

www.delcodevelopment.com